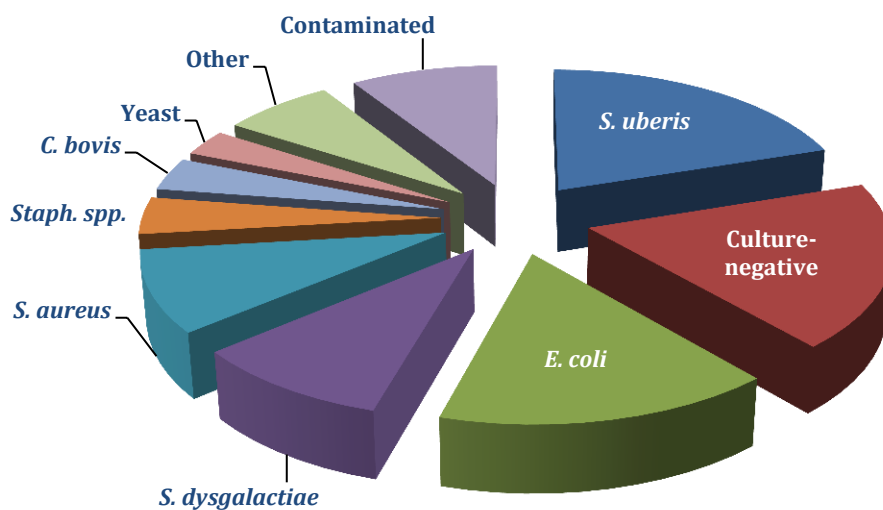


SEPTEMBER 2013

## CLINICAL MASTITIS ON FLEMISH DAIRY FARMS

Since September 2012, the **M-team** precisely monitors the number of clinical mastitis cases on 51 randomly selected Flemish dairy farms as part of a “[Veepeiler](#)” project and supported by [MCC Flanders](#). In this **M-news**, we provide you with some preliminary results.



### SOME STRIKING FINDINGS:

- **On a Flemish dairy farm managing 50 lactating dairy cows, on average 22 cases of clinical mastitis occur per year** – this means that on a farm with 100 lactating cows, on average every week one cow suffering from clinical mastitis is detected;
- **Most clinical mastitis cases are mild and symptoms remain limited to flakes or clots in the milk** – the clinical mastitis cases that require veterinary assistance are just the tip of the iceberg;
- **Most clinical mastitis cases are caused by the environmental pathogens *Streptococcus uberis* and *Escherichia coli*** – a high new infection rate with those bacteria suggests an increased exposure *and/or* a decreased immune competence of the cows;
- **The majority of *Streptococcus uberis* isolates shows resistance against at least one antimicrobial** – it is therefore recommended to treat clinical mastitis cases based on a treatment protocol developed by the veterinarian taking into account the results of previously carried out antimicrobial susceptibility tests.

**M-team**, altijd paraat als het om uw melk gaat!

